

# MPack 372A

## 372kWh Liquid-Cooling Battery

**High Security:** Using high-safety lithium iron phosphate batteries, battery pack partition safety isolation, built-in module-level fire protection unit, system-level fire protection unit, active safety early warning system, to ensure safe and reliable operation of the system.

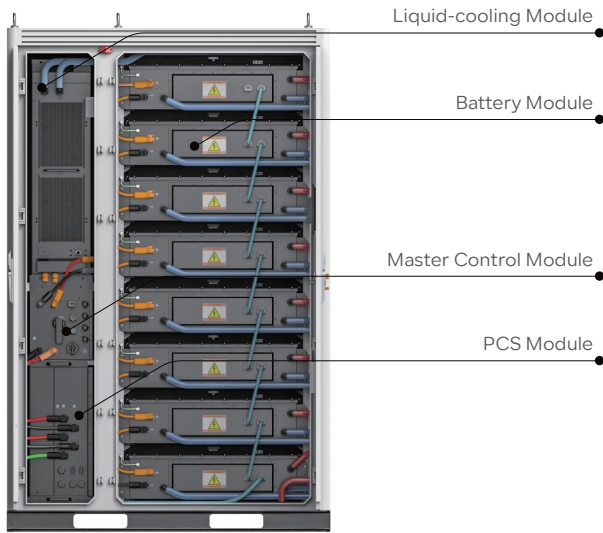
**Highly integrated:** The whole machine is highly integrated battery system, PCS energy module, AC contactor switching module, EMS energy management system, which can be directly and quickly installed and deployed by end users.

**On-off Grid Switching:** The system supports on-grid and off-grid switching. When the grid is powered off, it can be switched from on-grid to off-grid power supply, and supports off-grid load power supply.

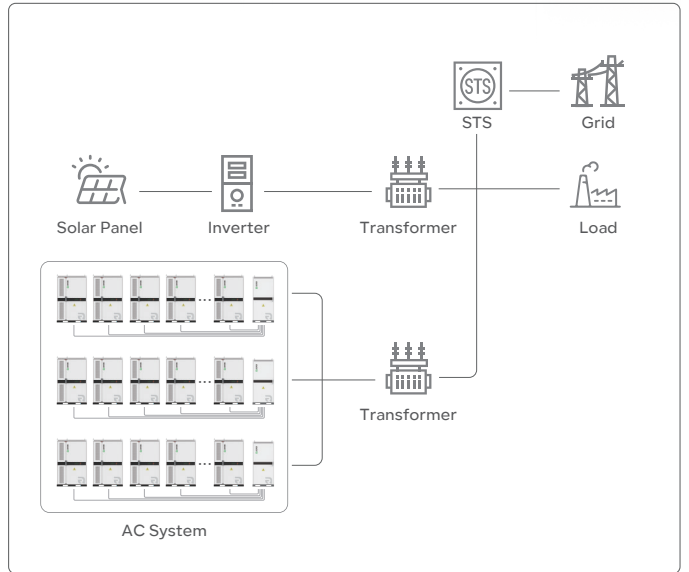
**Long Cycle Life:** It uses a lithium iron phosphorous battery and has a cycle life of over 8000 times, guaranteeing a system life of over 15 years.



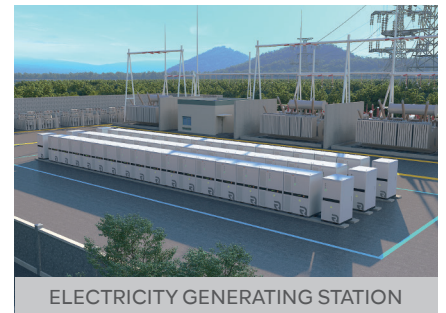
### System Demonstration



### System Layout



### Application Scenario



## Battery Energy Storage

Single Cell Type	LFP 3.2V/280AH
Module Combination	1P52S
System Combination	8 modules in series
Capacity (kWh)	372.736
Nominal Voltage (Vdc)	1331.2
Voltage Range (Vdc)	1,218.88~1,476.8 (2.93V~3.55V)
Charge/Discharge Current	0.5C
Discharge Depth	90% DoD
Service Life	>8000 cycles@80%DoD
Thermal Management Mode	Liquid cooling technology
Thermal runaway management	Aerosol Extinguishing or PFH

## AC Output

Rated AC Output Power(kW)	200
Max. AC Output Power(kVA)	220
Rated Output Voltage(Vac)	690
Output Voltage Range	-15%~10%(settable)
Grid Frequency Range(Hz)	50/60
Max. Output Current(A)	185.2
Power Factor	>0.99(at rated power)
Adjustable Power Factor	1(leading)~1(lagging)
THDi	<3%(at rated power)
Overloading Capability	110%

## System Characteristic

PCS Cooling	Forced Air Cooling
PCS Topology	Non-isolation
Communication Interface	CAN, RS485, Wi-Fi, LTE
Warranty	3 years free, paid from the 4th to the 15th year
Certifications	IEC62477-1, IEC62619 UL1973, UL9540A, IEC61000-6-4 EN62109-1/2

## General Parameters

Dimensions (W*D*H)	1510*1450*2350mm / 59*57*93in
Total Weight	4100kg / 9039lb
Operation Altitude	2000m / 6561ft
Noise Level @1m	<75 dB(A)
IP Rating	IP54
Operating Temperature	-20°C~55°C
Operating Humidity (RH)	0~95%
Storage Conditions	-20°C~30°C Up to 95% RH, non-condensing State of Energy (SoE): 50% initial



## Packaging & Shipping Details

