

# EStand M260

## Mobile Battery-Buffered EVC System

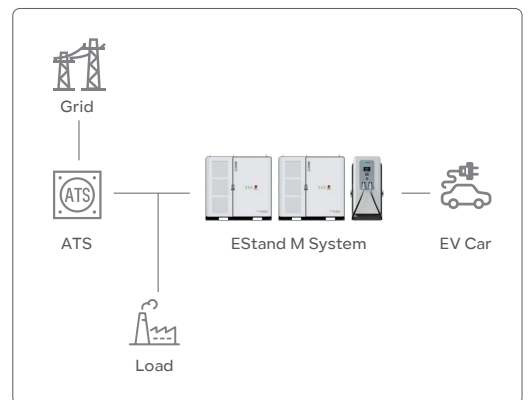
Scalable to 520kWh  
2\*260kWh liquid-cooled lithium-ion battery



### System Demonstration



### System Layout



### Application Scenario



Energy Storage System	
Battery Capacity(kWh)	261
Battery Charging Rate	≤0.95C
Battery Discharge Rate	≤0.95C
Battery Efficiency	≥97%
Battery Module IP Rating	IP65
Battery Cooling System	Liquid-cooling
Thermal Control Management	Aerosol Extinguishing
Dimensions (W*D*H)	1800*1500*1750mm / 70.8*59*68.9in
Weight	2850kg / 6283lb

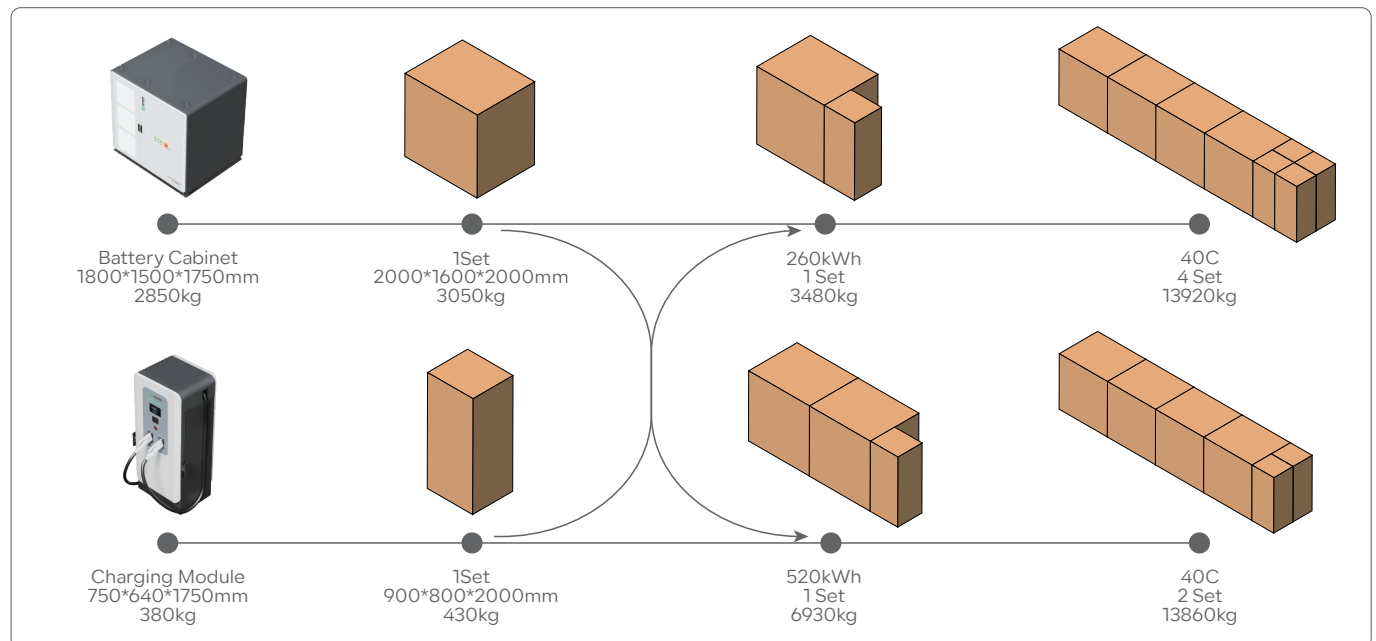
AC Input	
Rated AC Output Power(kW)	250
Max. AC Output Power(kVA)	250
Rated Output Voltage(Vac)	400
Output Voltage Range	-15%~10%(settable)
Grid Frequency Range(Hz)	50/60
Max. Output Current(A)	360
Adjustable Power Factor	>0.99
THDi	<3%

Standard	
Battery	IEC62619
EV Charger	EN 61851-1 EN 61851-23, EN 61000-2/-4
System Level	IEC 62619 EN62109-1/2 EN61000-6-2/4, UN38.3

Charging System	
Charging Type	DC fast charging
DC Output Power(kW)	240
DC Output Voltage(Vdc)	200~1000*
Maximum Current(A)	250
Distribution Systems	TN-S,TN-C, TN-C-S, TT (required external RCD)
Connector Type	3P + N + PE
Protection	Overcurrent, overvoltage, undervoltage integrated surge protection, ground fault including DC leakage protection, door opening protection
Power Factor (Full Load)	≥0.99
THDi	<5%
Efficiency	≥ 94% (peak)
Dimensions (W*D*H)	750*640*1750mm / 29.5*25*68.9in
Weight	380kg / 837.7lb
	*Constant power from 300~1000

General Parameters	
Ambient Temperature	-25°C~50°C(over 45°C derating)
Humidity	≤95%, No condensation
Storage Conditions	-20°C to 30°C Up to 95% RH, non-condensing State of Energy (SoE): 50% initial
Altitude	2000m / 6561ft
Noise Level @1m	<80 dB(A)
EMC Emission	Type A
Medium Interference	No explosive hazardous, No toxic & harmful gases Without strong vibration and shock no strong electromagnetic interference
System IP Rating	IP54

## ■ Packaging & Shipping Details



# EStand 240

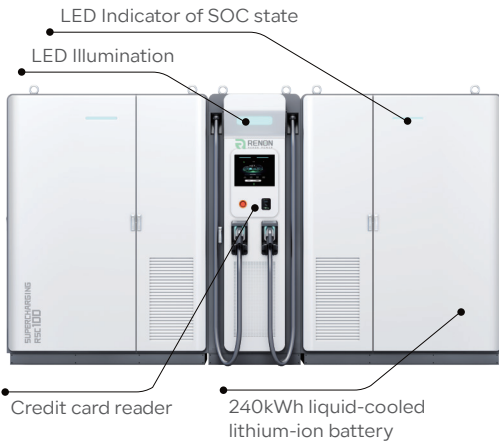
## Battery-Buffered EVC System

Scalable to 480kWh

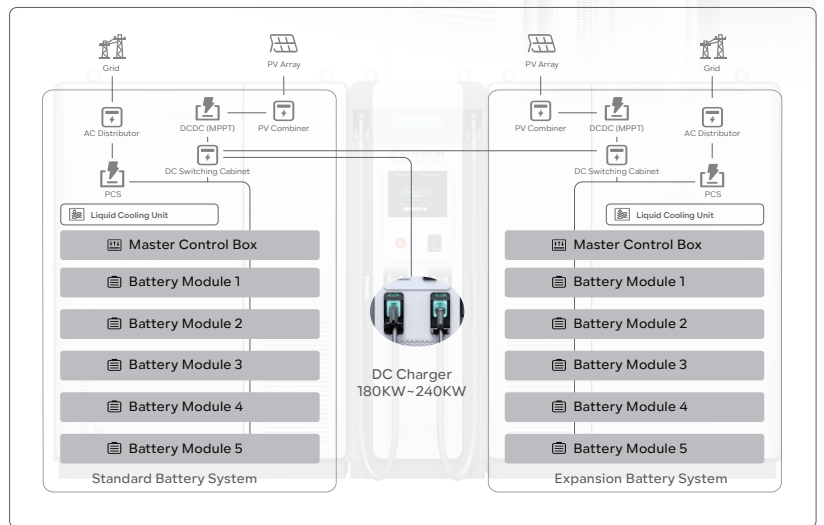
2\*240kWh liquid-cooled lithium-ion battery



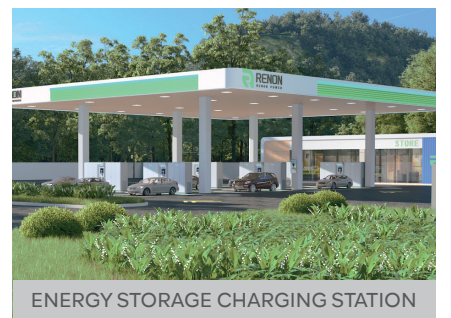
### System Overview



### System Layout



### Application Scenario



Product Specification	240kWh	480kWh
Type	DC Charging Station With ESS	
Installation	On Ground	
Applicable Site	Outdoors or Underground Parking	
Material	Industrial Grade Alloy	
Color	White weather-resistant coating	
Dimensions (W*D*H)	2557*700*2350mm / 100.7*27.5*92.5in	4314*700*2350mm / 201.4*27.5*92.5in
Weight	3850kg / 8487.8lb	7350kg / 16204lb
<b>Energy Storage System</b>		
Battery Capacity(kWh)	240	480
Battery Charging Rate	≤0.5C	
Battery Discharge Rate	<1C	
Battery Efficiency	≥97%	
Battery Module IP Rating	IP65	
Battery Cooling System	Liquid-cooling	
Thermal Control Management	Aerosol Extinguishing	
<b>AC Output</b>		
Rated AC Output Power(kW)	125	250
Max. AC Output Power(kVA)	150	300
Rated Output Voltage(Vac)	400	400
Output Voltage Range(Vac)	-15% ~ +10%(settable)	
Rated Grid Frequency(Hz)	50/60	
Max. Output Current(A)	182	364
Adjustable Power Factor	>0.99	
THDi	<3%	
<b>PV Input</b>		
DC Input Voltage(Vdc)	300~825(Start up Voltage:375)	
Max Input current(Adc)	100	200
Rated Power(kW)	60	120
Number of MPPT	2	4
Cooling System	Air-cooled	
<b>Standard</b>		
Battery	IEC 62619	
EV Charger	EN 61851-1, EN 61851-23, EN 61000-2/-4	
System Level	IEC 62619, EN62109-1/2, EN61000-6-2/4, UN38.3	
<b>Safety</b>		
Input Protection	Under voltage protection,over voltage protection,over current protection, over temperature protection,leakage protection, lightning protection, short circuit protection	
Output Protection	Short circuit protection,over-temperature protection,communication fault protection,leakage protection,over-current protection	
Emergency Protection	Set emergency stop button,leakage protection function,high-precision output insulation monitoring function	
Special Protection	IP54 protection level, anti-salt damage	

Charging System	
Charging Voltage(Vdc)	150~1000(Constant power from 300-1000)
Charging Efficiency	95% (peak)
Connctors	2
Power Distribution	2 connectors intelligent distribution
Charging Power	180kW/240kW
Cable	400A, 5m, CCS
Cooling System	Air-cooling
User Interface	7" LCD high-contrast touchscreen, optional 15.6" or 32" LCD display
User Authentication	RFID, QR code
RFID Reader	ISO/IEC 14443 A Mifare RFID reader
Connectivity	4G/3G/Ethernet (RJ45)
Communication	Proprietary and OCPP 1.6J
Emergency Button	Yes

Meter	
AC Side	AC meter
DC Side	2-access DC meter

General Parameters	
Ambient Temperature	-25°C ~ 50°C(over 45°C derating)
Humidity	≤95%, No condensation
Storage Conditions	-20°C ~ 30°C, Up to 95% RH, non-condensing, State of Energy (SoE): 50% initial
Altitude	2000m / 6561ft
Noise Level @1m	<80 dB(A)
EMC Emission	Type A
Medium	No explosive hazardous, No toxic & harmful gases
Interference	Without strong vibration and shock,no strong electromagnetic interference
System IP Rating	IP54

## ■ Packaging & Shipping Details

