

EStand M260

Mobile Battery-Buffered EVC System

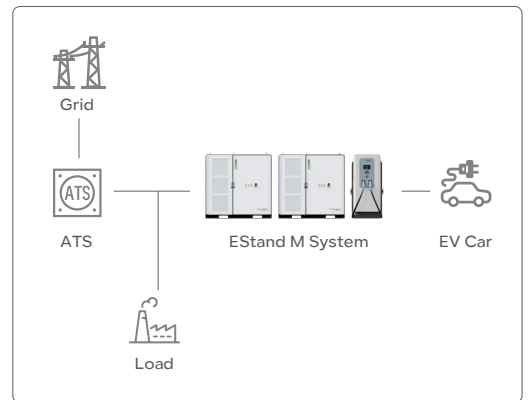
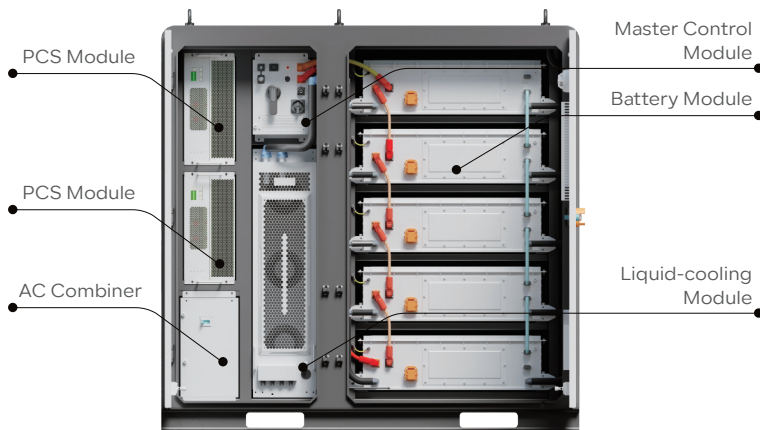
Scalable to 520kWh

2*260kWh liquid-cooled lithium-ion battery



System Demonstration

System Layout



Application Scenario



Energy Storage System	
Battery Capacity(kWh)	261
Battery Charging Rate	≤0.5C
Battery Discharge Rate	≤0.8C
Battery Efficiency	≥97%
Battery Module IP Rating	IP65
Battery Cooling System	Liquid-cooling
Thermal Control Management	Aerosol Extinguishing
Dimensions (W*D*H)	1800*1500*1750mm / 70.8*59*68.9in
Weight	2850kg / 6283lb

AC Input	
Rated AC Output Power(kW)	250
Max. AC Output Power(kVA)	266
Rated Output Voltage(Vac)	480
Output Voltage Range	-15% - +10%(settable)
Grid Frequency Range(Hz)	60Hz(settable)
Max. Output Current(A)	330.8
Power Factor	1 (leading) - 1(lagging)
Adjustable Power Factor	> 0.99
THDi	< 3%
Overloading Capability	110%

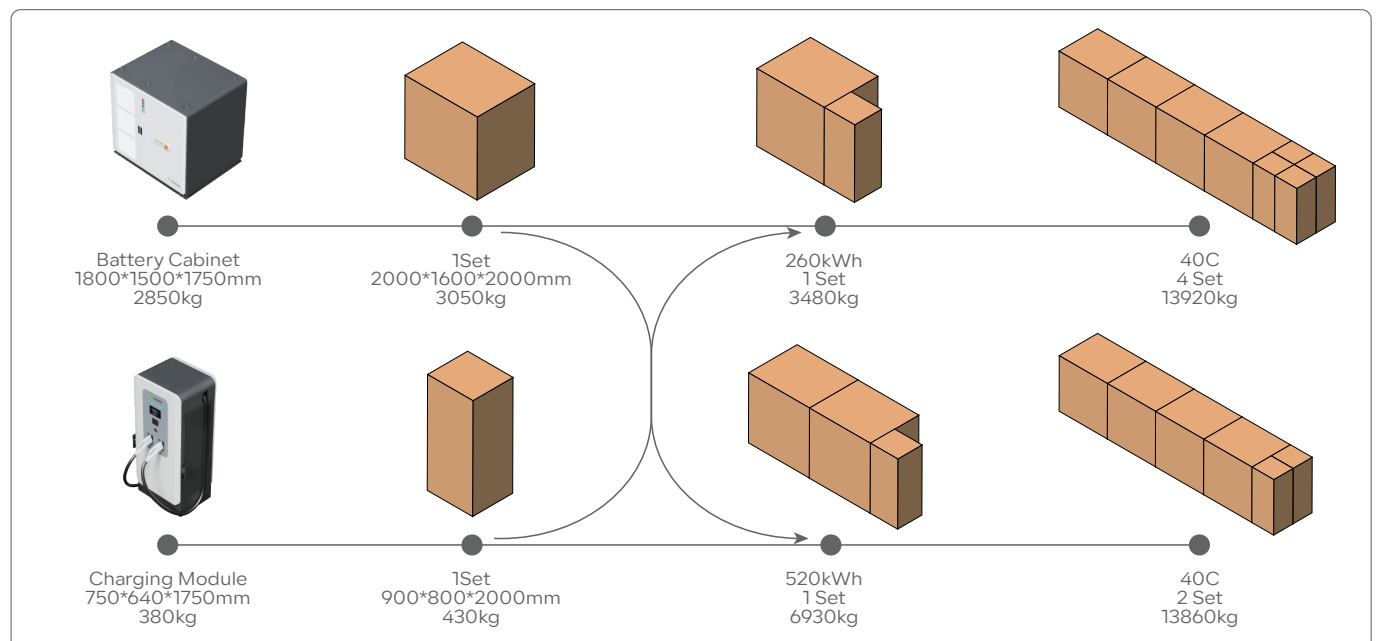
Standard	
Battery	UL9540A
EV Charger	UL2202, FCC, EN 61851-1, EN 61851-23, EN 61000-2/-4
System Level	UL 1973, UL9540A, UL9540, FCC, IEC 62619, EN62109-1/2, EN61000-6-2/4, UN38.3

Charging System	
Charging Type	DC fast charging
DC Output Power(kW)	240
DC Output Voltage(Vdc)	200-1000*
Maximum Current(A)	250
Distribution Systems	TN-S, TN-C, TN-C-S, TT (required external RCD)
Connector Type	3P + N + PE
Protection	Overcurrent, overvoltage, undervoltage, integrated surge protection, ground fault including DC leakage protection, door opening protection
Power Factor (Full Load)	≥ 0.99
THDi	< 5%
Efficiency	≥ 94% (peak)
Dimensions (W*D*H)	750*640*1750mm / 29.5*25*68.9in
Weight	380kg / 837.7lb

*Constant power from 300-1000

General Parameters	
Ambient Temperature	-25°C-50°C(over 45°C derating)
Humidity	≤95%, No condensation
Storage Conditions	-20°C to 30°C, Up to 95% RH, non-condensing, State of Energy (SoE): 50% initial
Altitude	2000m / 6561ft
Noise Level @1m	< 80 dB(A)
EMC Emission	Type A
Medium	No explosive hazardous, No toxic & harmful gases Without strong vibration and shock, no strong electromagnetic interference
Interference	
System IP Rating	IP54

■ Packaging & Shipping Details



EStand 240

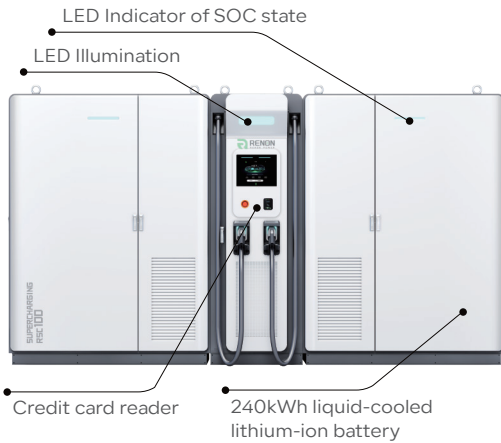
Battery-Buffered EVC System

Scalable to 480kWh

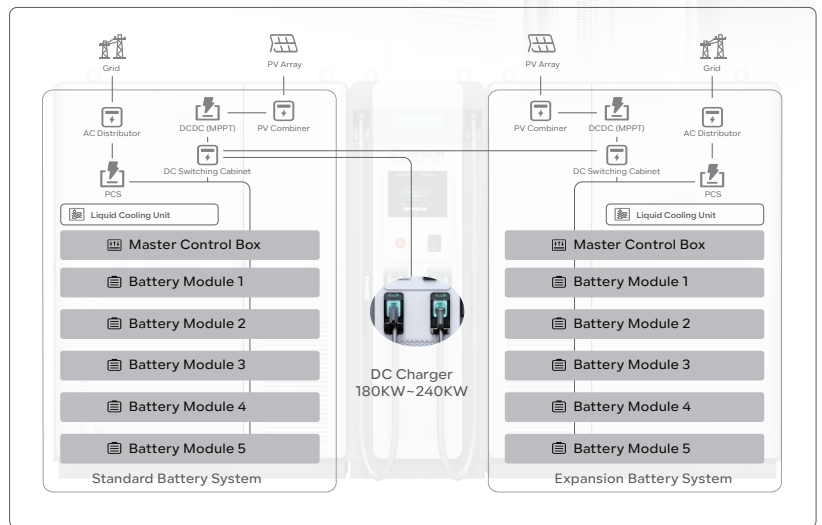
2*240kWh liquid-cooled lithium-ion battery



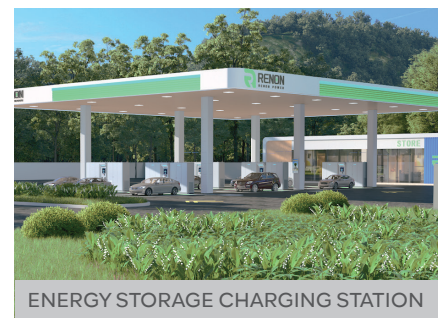
System Overview



System Layout



Application Scenario



Product Specification	240kWh	480kWh
Type	DC Charging Station With ESS	
Installation	On Ground	
Applicable Site	Outdoors or Underground Parking	
Material	Industrial Grade Alloy	
Color	White weather-resistant coating	
Dimensions (W*D*H)	2557*700*2350mm / 100.7*27.5*92.5in	4314*700*2350mm / 201.4*27.5*92.5in
Weight	3850kg / 8487.8lb	7350kg / 16204lb
Energy Storage System		
Battery Capacity(kWh)	240	480
Battery Charging Rate	≤0.5C	
Battery Discharge Rate	≤0.8C	
Battery Efficiency	≥97%	
Battery Module IP Rating	IP65	
Battery Cooling System	Liquid-cooling	
Thermal Control Management	Aerosol Extinguishing	
AC Output		
Rated AC Output Power(kW)	125	250
Max. AC Output Power(kVA)	137.5	275
Rated Output Voltage(Vac)	480	480
Output Voltage Range(Vac)	-15% ~ +10%(settable)	
Rated Grid Frequency(Hz)	60Hz(settable)	
Max. Output Current(A)	165.4	330.8
Adjustable Power Factor	>0.99	
THDi	<3%	
PV Input		
DC Input Voltage(Vdc)	300~825(Start up Voltage:375)	
Max Input current(Adc)	100	200
Rated Power(kW)	60	120
Number of MPPT	2	4
Cooling System	Air-cooled	
Standard		
Battery	UL9540A	
EV Charger	UL2202, FCC, EN 61851-1, EN 61851-23, EN 61000-2/-4	
System Level	UL 1973, UL9540A, UL9540, FCC, IEC 62619, EN62109-1/2, EN61000-6-2/4, UN38.3	
Safety		
Input Protection	Under voltage protection,over voltage protection,over current protection, over temperature protection,leakage protection, lightning protection, short circuit protection	
Output Protection	Short circuit protection,over-temperature protection,communication fault protection,leakage protection,over-current protection	
Emergency Protection	Set emergency stop button,leakage protection function,high-precision output insulation monitoring function	
Special Protection	IP54 protection level, anti-salt damage	

Charging System	
Charging Voltage(Vdc)	150~1000(Constant power from 300-1000)
Charging Efficiency	95% (peak)
Connectors	2
Power Distribution	2 connectors intelligent distribution
Charging Power	180kW/240kW
Cable	400A, 5m, CCS
Cooling System	Air-cooling
User Interface	7" LCD high-contrast touchscreen, optional 15.6" or 32" LCD display
User Authentication	RFID, QR code
RFID Reader	ISO/IEC 14443 A Mifare RFID reader
Connectivity	4G/3G/Ethernet (RJ45)
Communication	Proprietary and OCPP 1.6J
Emergency Button	Yes

Meter	
AC Side	AC meter
DC Side	2-access DC meter

General Parameters	
Ambient Temperature	-25°C ~ 50°C(over 45°C derating)
Humidity	≤95%, No condensation
Storage Conditions	-20°C ~ 30°C, Up to 95% RH, non-condensing, State of Energy (SoE): 50% initial
Altitude	2000m / 6561ft
Noise Level @1m	<80 dB(A)
EMC Emission	Type A
Medium	No explosive hazardous, No toxic & harmful gases
Interference	Without strong vibration and shock,no strong electromagnetic interference
System IP Rating	IP54

■ Packaging & Shipping Details

