

# EBrick

## Rack Mounted LV Battery System

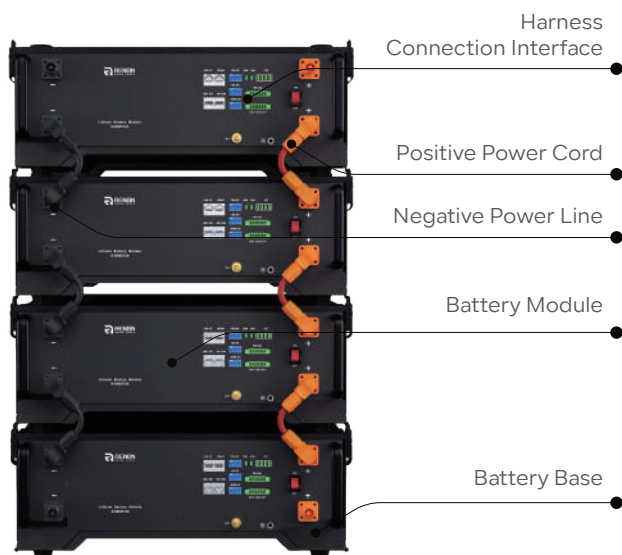
**Modular Design and Easy Installation:** EBrick's rack-mount design allows for customizable and simple installation, with the flexibility to connect multiple units in parallel. This reduces installation time and costs.

**Wi-Fi Connectivity and App Control:** EBrick features Wi-Fi connectivity, enabling users to remotely monitor and control the system via a dedicated app. This enhances user experience with real-time monitoring and efficient system management.

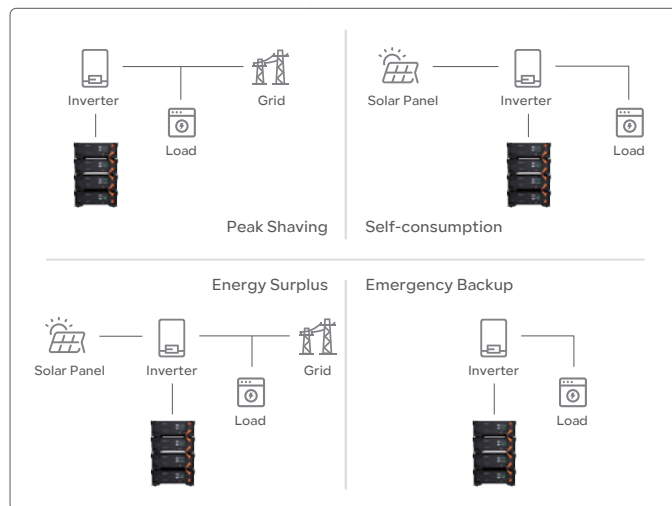
**Stable LiFePO4 Battery Technology:** EBrick uses reliable lithium iron phosphate (LiFePO4) batteries, offering up to 8000 cycles. Its efficient battery management system ensures high performance and safety.



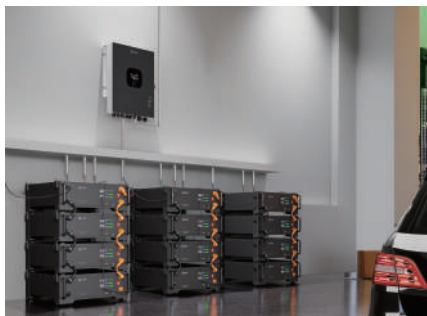
### Product Details



### System Layout



### Application Scenario



Battery Energy Storage	
Battery Chemistry	LiFePO4
Cell Capacity (Ah)	100
Nominal Energy (kWh)	5.12
Output Power (kW)	4.8
Default Voltage (V)	51.2
Voltage Range (V)	43.2 ~ 59.2
Max. Operation Current (A)	95
Primary Overcurrent Protection (A)	98@10S
Secondary Overcurrent Protection (A)	120@30mS
Max. Charging Voltage (V)	58.4
Discharge Cut-off (V)	43.2
Recommended Charging Voltage (V)	56.8
Dimension (W*D*H)	440*420*132mm 17.3*16.5*5.2in
Net Weight (Approximate)	45kg 99.2lb

General Parameters	
Scalability	Max. 31 systems in parallel
Storage Conditions	-20°C ~ 55°C(0°C ~ 35°C Recommended) Up to 90%RH, non-condensing Initial SoC: 50%
Operating Temperature	Charge: 0°C ~ 50°C Discharge: -20°C ~ 50°C
Cooling	Natural Cooling
Max. Altitude	2000m / 6561ft
Cycle Life	8000 Cycles
Communication	RS485, CAN, WiFi

System Characteristic	
Battery Model	R-EB005161
Battery Compliances	UL1973, UL9540A, IEC 62619, UN 38.3 CEI 0-21, UKCA, EN-61000, EN-62311
Installation Method	Rack Mounting
Installation Scene	Indoor
IP Rating	IP20
Warranty [1]	10 Years

[1] Please refer to the warranty letter for details

## ■ Packaging & Shipping Details

